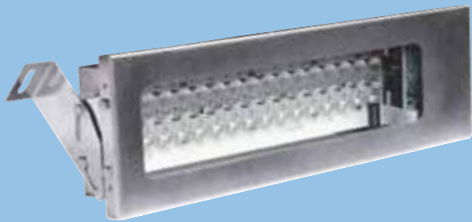


# Intelligent LED tunnel lighting that shines on... and on

## Dellux T Series

Anyone can package LEDs in a box and claim to offer a lighting solution, but cannot guarantee consistent light and expected life. The T Series tunnel luminaires are the most technologically advanced LED tunnel lighting products on the market. This cutting-edge solution incorporates our patented unique LED Degradation Compensation technology for a minimum life span of 15 years without compromising lighting intensity. The T series allows you to achieve significant energy and maintenance cost savings through our simple user-friendly network management interface.



### Benefits

- Reduced operating costs and easy maintenance
- 40% to 80% energy savings compared to conventional lighting systems
- No replacement of lamp or ballast
- Patented technology for a longer life cycle (>130,000 hours ~ 15 years) without light degradation
- Quick and easy installation
- Smaller UPS and/or generators for emergency back-up (save space and money)
- Enhanced safety

### Central network management for remote monitoring

- Individual lamp monitoring and control (remote diagnostic)
- Light Loss Meter

### Proven LED technology

- Installations in Canada, Europe and Latin America
- LED applications are multiplying

### Environmentally friendly

- No toxic material to dispose of, less waste
- Lightweight design (no need for reinforced mounting structures)
- Robust assembly unaffected by shock, vibration, corrosion or external environment
- RoHS compliant



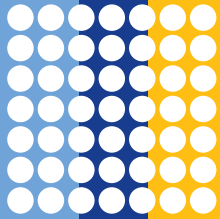
621 de la Sablière  
Bois-des-Filion (Québec)  
Canada J6Z 4T2

Tel.: 450.965.7700  
Fax.: 450.965.2216  
info@dellux.ca

[www.dellux.ca](http://www.dellux.ca)

# Tunnel





# Dellux T Series Model T8S-TD



## Mechanical

- Height: 170mm
- Width: 603mm
- Thickness: 71mm
- Weight : 7kg
- Storage temperature (ambient): -40° to 65°C
- Material: 316L (1.4404) / 316TI (1.4571)
- Stainless steel or aluminum
- Tilt angle: adjustable from 45° to 70°
- Front lens: clear tempered glass (3.4mm)
- Ingress protection: IP67, IP68

## Electrical

- Operating voltage: Universal 90-240VAC
- Operating lamp current: Max 0.8Amp at 120VAC and 0.4Amp at 240VAC (0.33A average at 120VAC and 0.1666A average at 240VAC)
- Wattage: 75W max.; (40W average)
- Control interface: Powerline
- Operating temperature (ambient): -40° to 55°C

## Optical

- Time to reach 80% of max luminous flux switching: Instantaneous
- Time to re-strike after power interruption: Instantaneous
- Light depreciation after 130,000 lighting hours: None (compensated)
- Rated life: >130,000 hours before light degradation
- Color: White 6200°K

**\* Five (5) year limited warranty**

*Dellux Technologies reserves the right to modify the above details/specifications without prior notice.*