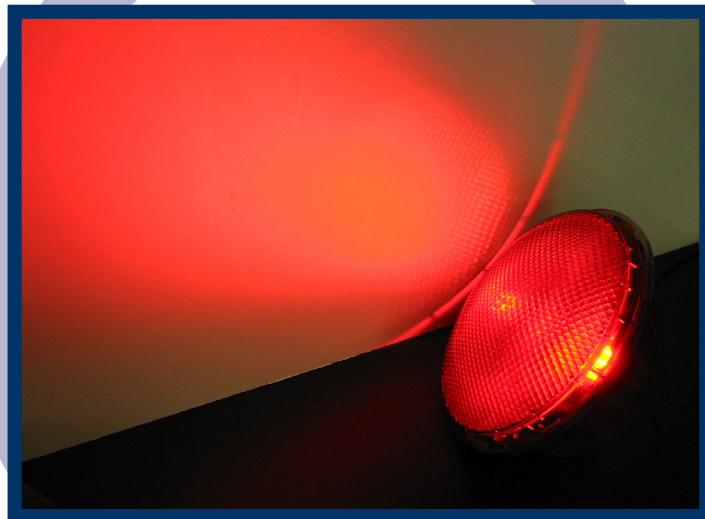


## LED Traffic Signal

*eclipse*<sup>™</sup>

**Eclipse 438 / 230 V**  
**Skandinavia**  
**200 mm**



**High efficiency due to new High Flux reflector Technology  
and central light source.**

**No Colour Phantom**

**Unrivalled reading contrast**

## Optical advantages and characteristics:

	<i>Typical Data</i>	<i>Norm</i>	<i>Definition</i>
<i>Luminous Intensity</i> <i>Red</i> <i>Yellow</i> <i>Green</i>	350 cd 350 cd 350 cd	EN 12368, 6.3, Tab. 1	B 2/1 Typ W
<i>Light distribution</i>	Wide angle	EN 12368, 6.4, Tab. 3	Type W, category B
<i>Uniformity</i>	minimum 1:2,2	EN 12368, 6.5	>1:10
<i>Phantom light</i>	colour phantom light	EN 12368, 6.6	No wrong signal possible from direct sunlight
<i>Ratio signal light / reflection</i>	Red > 16 Yellow > 16 Green > 16	EN 12368, 6.6	class 5 class 5 class 5
<i>Light colours</i>	<b>Red, Yellow, Green, White</b>	EN 12368, 6.7 DIN 6163, Part 5	

## Electrical characteristics: Preliminary

	<b>Typical Power consumption :</b>	<b>current at 230 VAC:</b>
<b>Red:</b>	Nom 14 Watt	65 mA
<b>Yellow:</b>	Nom 14 Watt	65 mA
<b>Green</b>	Nom 14 Watt	65 mA
<b>White</b>	Nom 14 Watt	65 mA

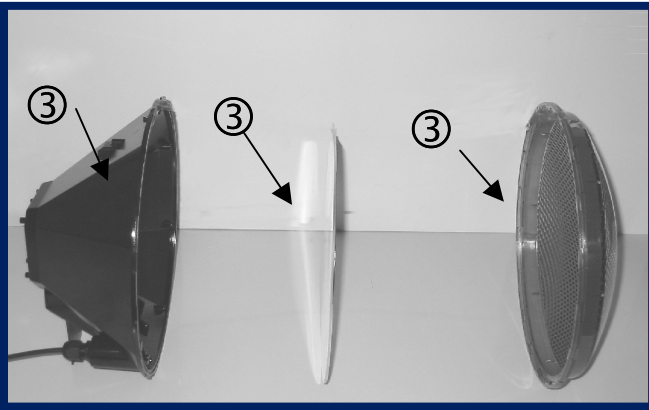
## Ambient conditions:

Storage temperature:	-20°C to +60°C
Storage relative humidity:	Max. 70%
Operating temperature:	-25°C bis +70°C

## Part Numbers:

	<b>Blacked lens</b>	<b>Coloured lens</b>
<b>Red</b>	<b>143917</b>	<b>143921</b>
<b>Amber</b>	<b>143918</b>	<b>143922</b>
<b>Green</b>	<b>143919</b>	<b>143923</b>
<b>White</b>	<b>143920</b>	

## Material data:



- ③ **Material front disc:**  
Polycarbonat.  
(Black and colour dye lens available)
- ③ **Material Fresnel lens:**  
Acryl clear
- ③ **Material housing:**  
Polycarbonat.

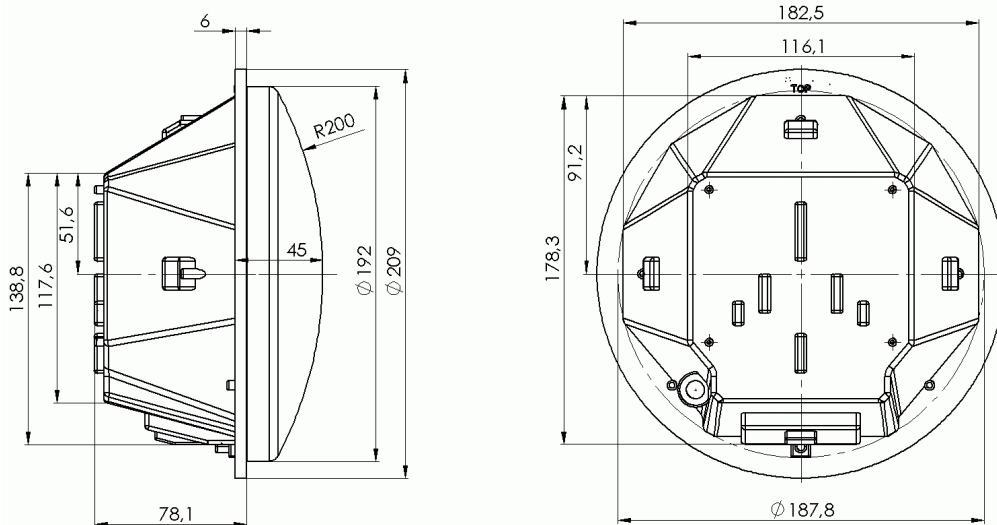
## Symbols:

### Flexible symbol design:

Symbols can be painted on the outer lens, or can be supplied in a mask



## Dimensions:



August 2006